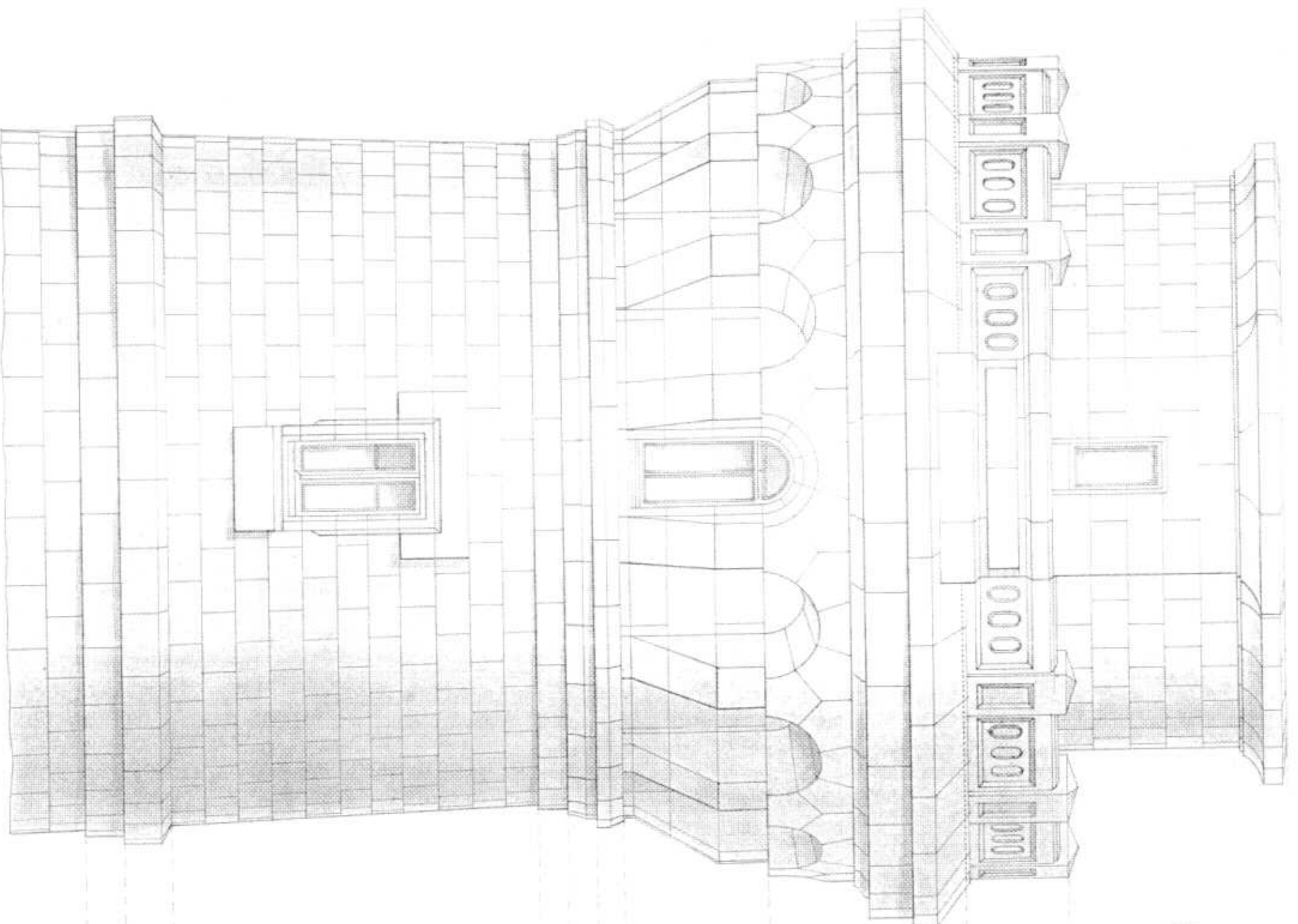


ELEVATION DU COURONNEMENT.



PHARE DE L'IL

Michelle de 0,02

(74,10)

570-0193

16-21,401

608,000

2067-1107

[65] (a) (b)

(1996, 1997)

(165)

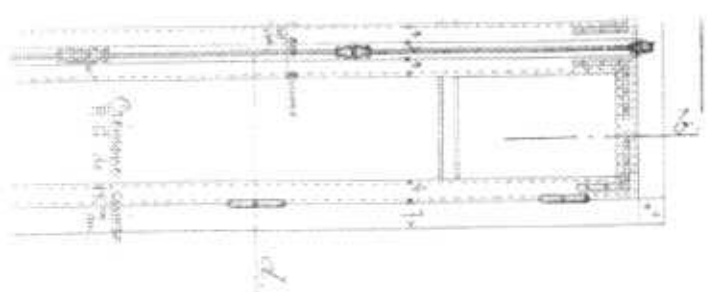
 $(61, 61^2)$

(60.71%)



Fenêtres du fil (6 sensibiles)

Corpus 27-8

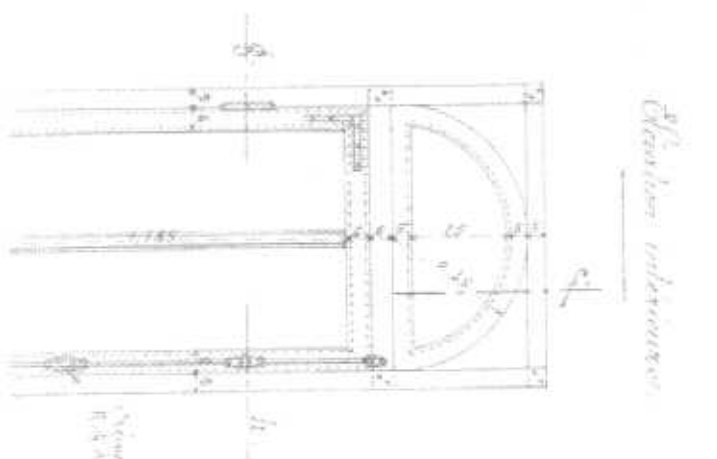


Données fournies de la chambre de service.

(? Senekaldis)

Chelonia *indivisa*

Gruppe e.f.



double fenêtre de la niche.

Ichneumon 0.05 p.m. (2.1)

Opuntia robusta.

Erington N. E.

